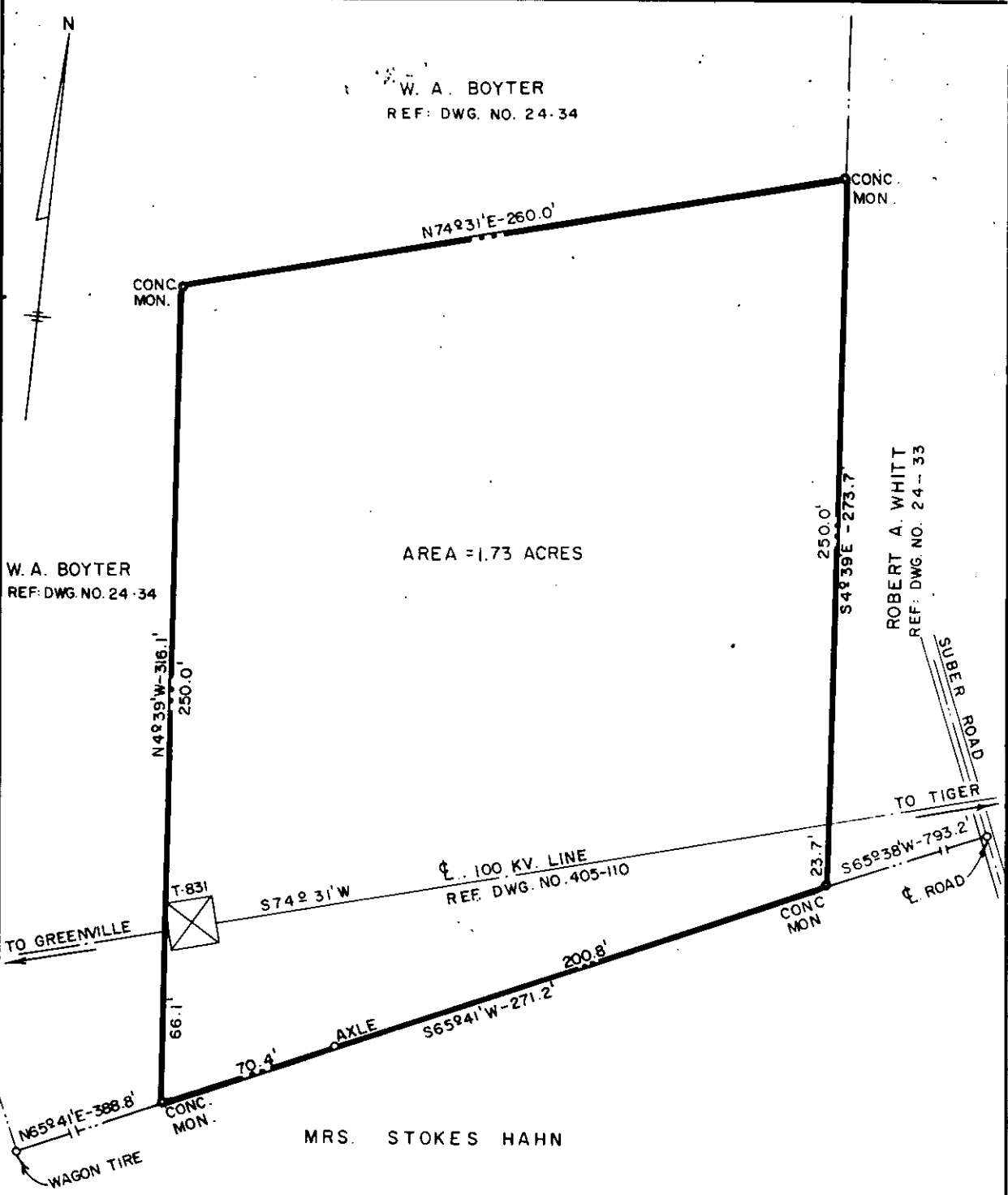


405

W. A. BOYTER
REF: DWG. NO. 24-34



W. A. BOYTER
REF: DWG. NO. 24-34

AREA = 1.73 ACRES

ROBERT A. WHITT
REF: DWG. NO. 24-33

TO GREENVILLE

TO TIGER

MRS. STOKES HAHN

NOTE: FOR TOPOGRAPHIC MAP SEE
DWG NO. 103-93

DEC 12 1963
17036

DUKE POWER COMPANY
CANE CREEK TIE STATION LOT
ACQUIRED FROM
W. A. BOYTER
NEAR TAYLORS, S.C
CHICK SPRINGS TOWNSHIP
GREENVILLE COUNTY :

Recorded December 12th, 1963 at 1:08 P.M.
#17036

SCALE: 1" = 50' SEPTEMBER 9, 1963
BOOK NO. 693 FILE NO. 24-31